



unique

UNDERSTANDING GENES
& CHROMOSOMES

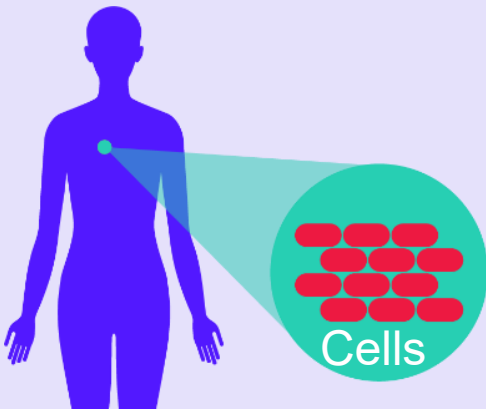
Easy read guide

16p13.11 duplications

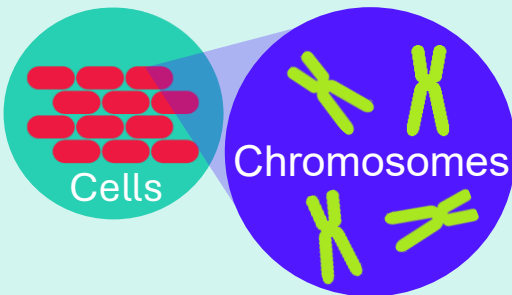
rarechromo.org



Before we learn about 16p13.11 duplications, first let us learn a little bit about our bodies.



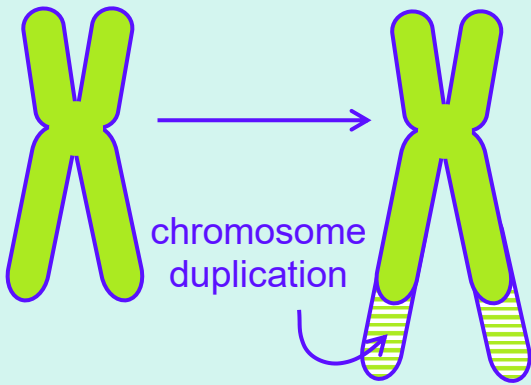
Our bodies are built from millions of tiny building blocks called cells.



Our cells contain chromosomes.

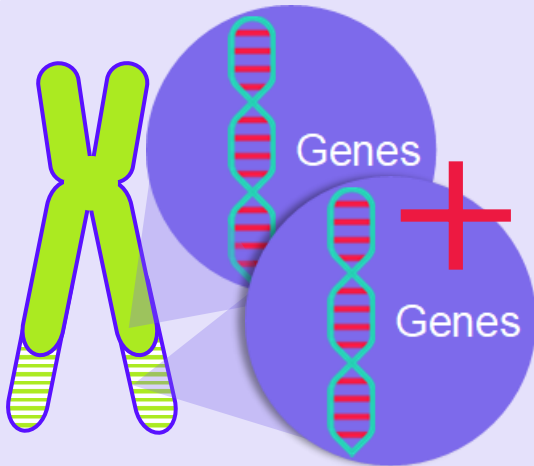


Inside our chromosomes are genes. Genes tell our bodies how to grow and work.

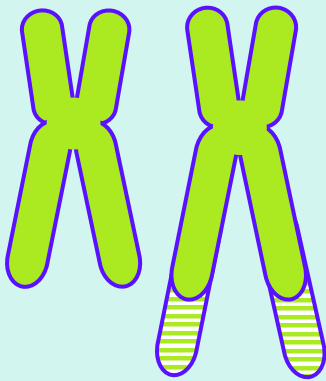


A 16p13.11 duplication means we have a small extra piece of a chromosome, called chromosome 16.

A microduplication is the same as a duplication but much smaller.

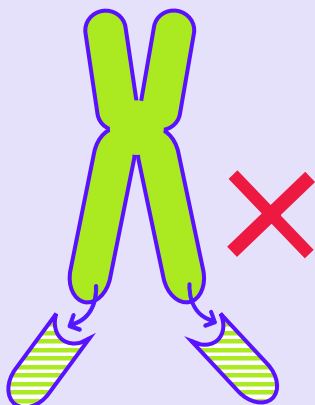


When we have an extra piece of a chromosome, the genes in that piece will have an extra copy. This can affect how our bodies grow and work.



Chromosomes come in pairs.

Even if one chromosome has a small extra piece, the other matching chromosome still has the usual number of genes.



If you have an extra piece of chromosome 16, it cannot be removed.



People with a 16p13.11 duplication are all different from each other.



Some people with a 16p13.11 duplication find some things harder to do than other people with a 16p13.11 duplication.



Some people find it difficult to learn how to read.



Some people find it difficult to learn how to speak.



Some people need help to understand things.



Some people feel a bit sad or worry a lot.

There is help for people who are sad and worry a lot.



Some people need to visit a doctor, dentist or therapist a bit more often than other people.



People with a 16p13.11 duplication can have different challenges and different strengths.



Why do I have a 16p13.11 duplication?

A 16p13.11 duplication often happens by chance. Most people are the first person in their family to have it.



Some people have a 16p13.11 duplication because their mum or dad have it.



If you have a child, they could have a 16p13.11 duplication too.



How do I know I have a 16p13.11 duplication?

You can only find out if you have a 16p13.11 duplication by having a genetic test.



It is good to know about your 16p13.11 duplication so you can get extra help if you need it.



If you would like to know more about your 16p13.11 duplication, you can talk to your doctor or a genetics specialist.



You can contact a 16p13.11 duplication support group.



You can contact or [join](#) a charity, like Unique.



**To find out more about Unique,
you can call us on the phone.**

+44(0)1883 723356



You can email us.

help@rarechromo.org



You can go to our website.

<https://rarechromo.org/>



You can send a letter to our office.

The Stables, Station Road West,
Oxted, Surrey, RH8 9EE, UK.



unique

UNDERSTANDING GENES
& CHROMOSOMES

[Website](#)

[Join us](#)

[Donate](#)

This guide was written by Unique, with images from Photosymbols.

Thank you to Ana Savu who assisted with reformatting this guide.

Version 1 [CA] 2024, Version 2 [NM] 2026

Copyright © Unique 2026

Rare Chromosome Disorder Support Group
Registered in England and Wales

Charity Number 1110661
Company Number 5460413